

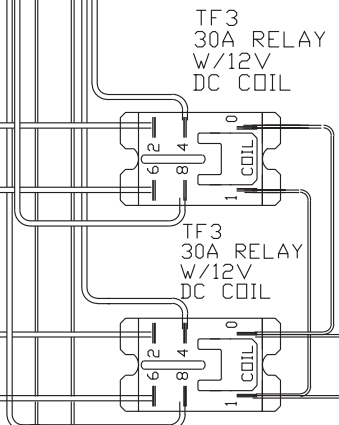
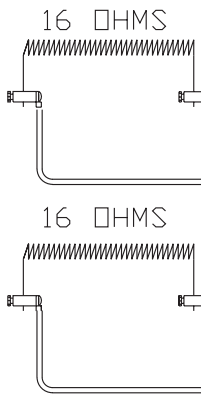
CR6
6-2/8-1 CORDSET
6-50P CAP

CAUTION
TO PROVIDE CONTINUED PROTECTION AGAINST THE RISK OF ELECTRIC SHOCK, CUSTOMER'S POWER SUPPLY MUST BE PROPERLY GROUNDED.

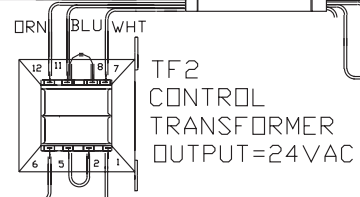
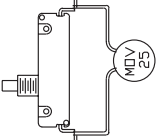
NOTE: GROUNDING SCREW TO HAVE A GREEN COLORED SLOTTED AND/OR HEX HEAD NO SUBSTITUTES. USE #1005

NOTE: THE SURFACE OF THE INSULATED WIRES MARKED (X) TO BE COLORED GREEN, WITH OR WITHOUT ONE OR MORE YELLOW STRIPES.

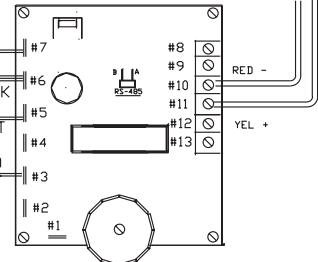
POWER REQ'TS
240 VOLTS
1 PHASE
60 HERTZ
30 AMPS
7200 WATTS
MAX TEMP 2000°F



TF6
DOOR OPER'D
POWER CUTOFF
SWITCH



PY50
TYPE K T/C



TF22
DTC 1020

WIRE SIZES
NOTE: ALL WIRES TO BE TYPE SEW/SF2, #14 AWG MINIMUM UNLESS NOTED

TO RE-ORDER ELEMENTS, SPECIFY		
DESCRIPTION	QTY	LOC
ELHT22	2	SIDE

1/2 AMP FUSE

COMMENTS

PARAGON INDUSTRIES
2011 SOUTH TOWN EAST BLVD
MESQUITE, TEXAS 75149

PRODUCT DESCRIPTION
21"W, 13.25"H, 21"DP
240V, 1PH, 60HZ, 30A, 7200W

PART NO. HT22D
WIRING DIAGRAM

REV
-