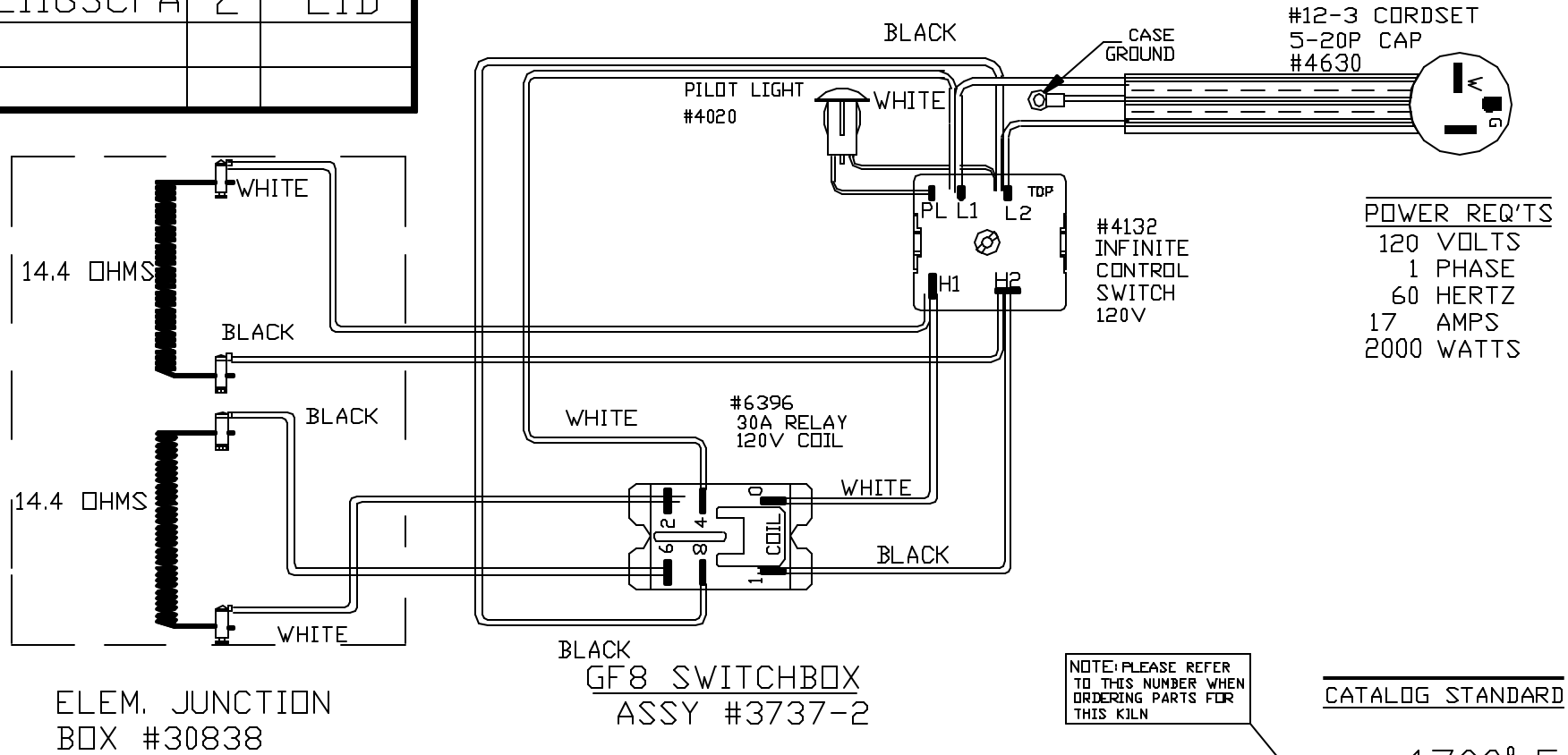


WIRING NOTE

ALL WIRES #14 AWG,  
TYPE SEW/SF2 MINIMUM  
UNLESS OTHERWISE NOTED

TO RE-ORDER ELEMENTS, SPECIFY		
DESCRIPTION	QTY	LOC
EL3321163CFA	2	LID



POWER REQ'TS  
120 VOLTS  
1 PHASE  
60 HERTZ  
17 AMPS  
2000 WATTS

NOTE: PLEASE REFER TO THIS NUMBER WHEN ORDERING PARTS FOR THIS KILN

CATALOG STANDARD

1700° F

REV	DATE	BY	DESCRIPTION
-	6/5/02	DTB	

SWITCH BOX ASSY- 42038-1

PARAGON INDUSTRIES  
2011 SOUTH TOWN EAST BLVD  
MESQUITE, TEXAS 75149

WIRING DIAGRAM

120V 1 PHASE 60HZ 2000WATTS

PART NO	REV
3321163CFA	-
GF8B	FILE