

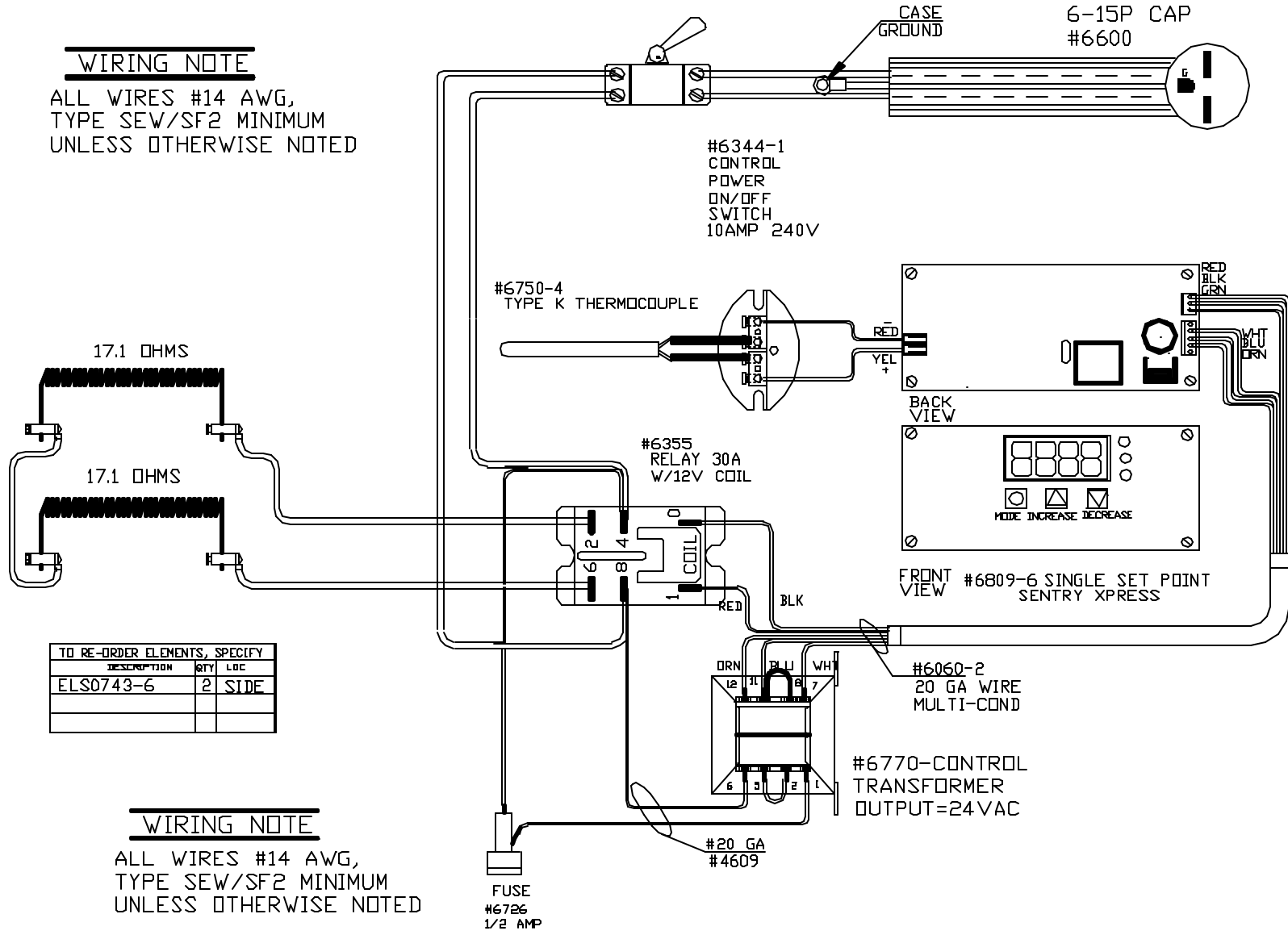
PART NO S0743-6

14/3 CORDSET  
6-15P CAP  
#6600

POWER REQ'TS  
240 VOLTS  
1 PHASE  
60 HERTZ  
7 AMPS  
1680 WATTS

WIRING NOTE

ALL WIRES #14 AWG,  
TYPE SEW/SF2 MINIMUM  
UNLESS OTHERWISE NOTED



17.1 OHMS

17.1 OHMS

TO RE-ORDER ELEMENTS, SPECIFY		
DESCRIPTION	QTY	LOC
ELS0743-6	2	SIDE

WIRING NOTE

ALL WIRES #14 AWG,  
TYPE SEW/SF2 MINIMUM  
UNLESS OTHERWISE NOTED

PRG CFG6

PAINTED  
STEEL CASE

2350°F

NOTE: PLEASE REFER  
TO THIS NUMBER WHEN  
ORDERING PARTS FOR  
THIS KILN

REV	DATE	BY	DESCRIPTION
-	3/11/02	DTB	
A	4/25/02	DTB	CORRECTED EL WIRING
B	10/24/02	DTB	CHG T/C TO 1/4 DIA

SWITCH BOX ASSY- 42008-1

PARAGON INDUSTRIES  
2011 SOUTH TOWN EAST BLVD  
MESQUITE, TEXAS 75149

WIRING DIAGRAM

240V, 1 PHASE, 60HZ, 1680 WATTS

PART NO	REV
S0743-6	B
KL CALDERA 8X8X6 SSP-PAR	