

PART NO 9C211J1B00

WIRING NOTE

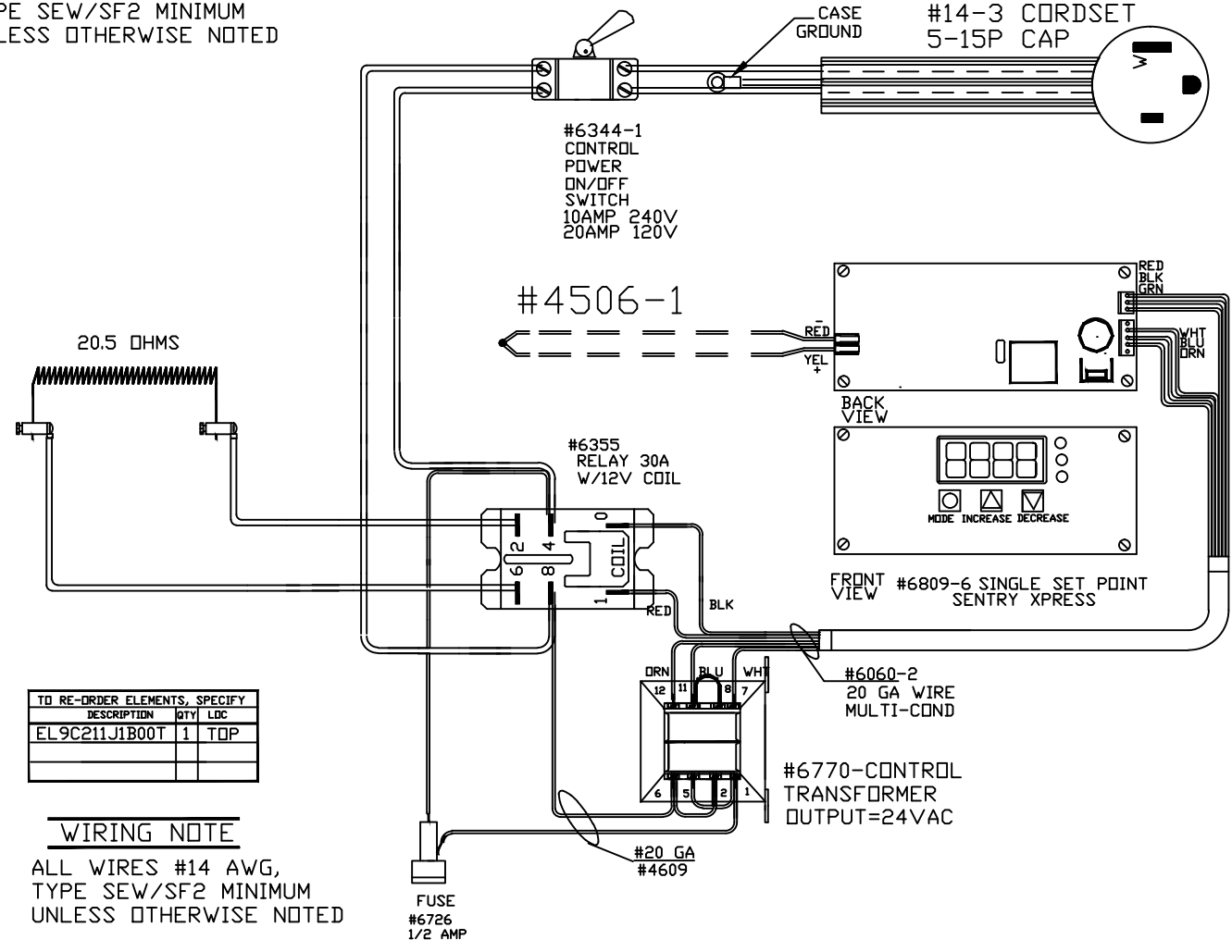
ALL WIRES #14 AWG,
TYPE SEW/SF2 MINIMUM
UNLESS OTHERWISE NOTED

HIGH TEMP CS/HSJ/HSJD

#60050
#14-3 CORDSET
5-15P CAP

POWER REQ'TS

120 VOLTS
1 PHASE
60 HERTZ
6 AMPS
700 WATTS



TO RE-ORDER ELEMENTS, SPECIFY		
DESCRIPTION	QTY	LDC
EL9C211J1B00T	1	TOP

WIRING NOTE

ALL WIRES #14 AWG,
TYPE SEW/SF2 MINIMUM
UNLESS OTHERWISE NOTED

CFG 1
BLUE
1200°F

REV	DATE	BY	DESCRIPTION	SWITCH BOX ASSY- 42203-1	WIRING DIAGRAM	PART NO	9C211J1B00	REV
-	11/8/10	DTB		PARAGON INDUSTRIES 2011 SOUTH TOWN EAST BLVD MESQUITE, TEXAS 75149	120V 1 PHASE 60HZ 700WATTS			-
						13X3X6 SSP BLUEBIRDJR		FILE