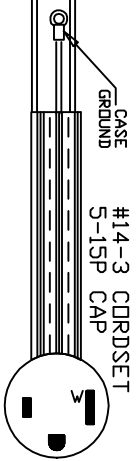


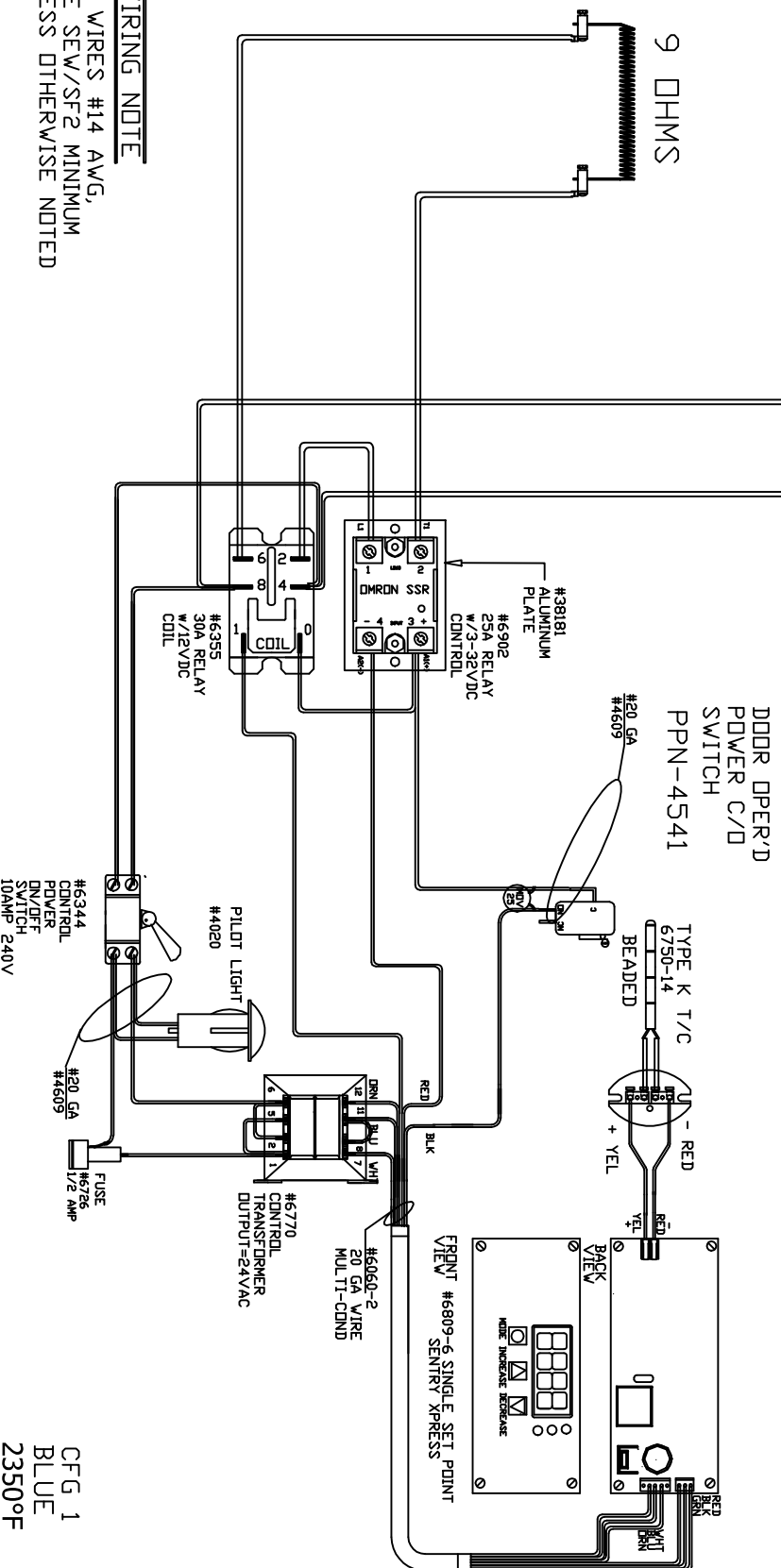
TO RE-ORDER ELEMENTS, SPECIFY		
DESCRIPTION	QTY	LDC
EL009.01142-69	1	SIDES

PART NO 5C212JMB00



POWER REQ'TS
120 VOLTS
1 PHASE
60 HERTZ
14 AMPS
1600 WATTS

CAUTION
TO PROVIDE CONTINUED PROTECTION AGAINST THE RISK OF ELECTRIC SHOCK, CUSTOMER'S POWER SUPPLY MUST BE PROPERLY GROUNDED.



WIRING NOTE
ALL WIRES #14 AWG,
TYPE SEW/SF2 MINIMUM
UNLESS OTHERWISE NOTED

SWITCH BOX ASSY- 42271-46

PARAGON INDUSTRIES
2011 SOUTH TOWN EAST BLVD
MESQUITE, TEXAS 75149

WIRING DIAGRAM

120V, 1 PHASE, 14A, 60HZ, 1600 WATTS

NOTE: PLEASE REFER
TO THIS NUMBER WHEN
ORDERING PARTS FOR
THIS KILN

CFG 1
BLUE
2350pF

REV	DATE	BY	DESCRIPTION
-	6/27/18	MHK	

SWITCH BOX ASSY- 42271-46

WIRING DIAGRAM

PART NO	REV
5C212JMB00	-
KM14T	FILE